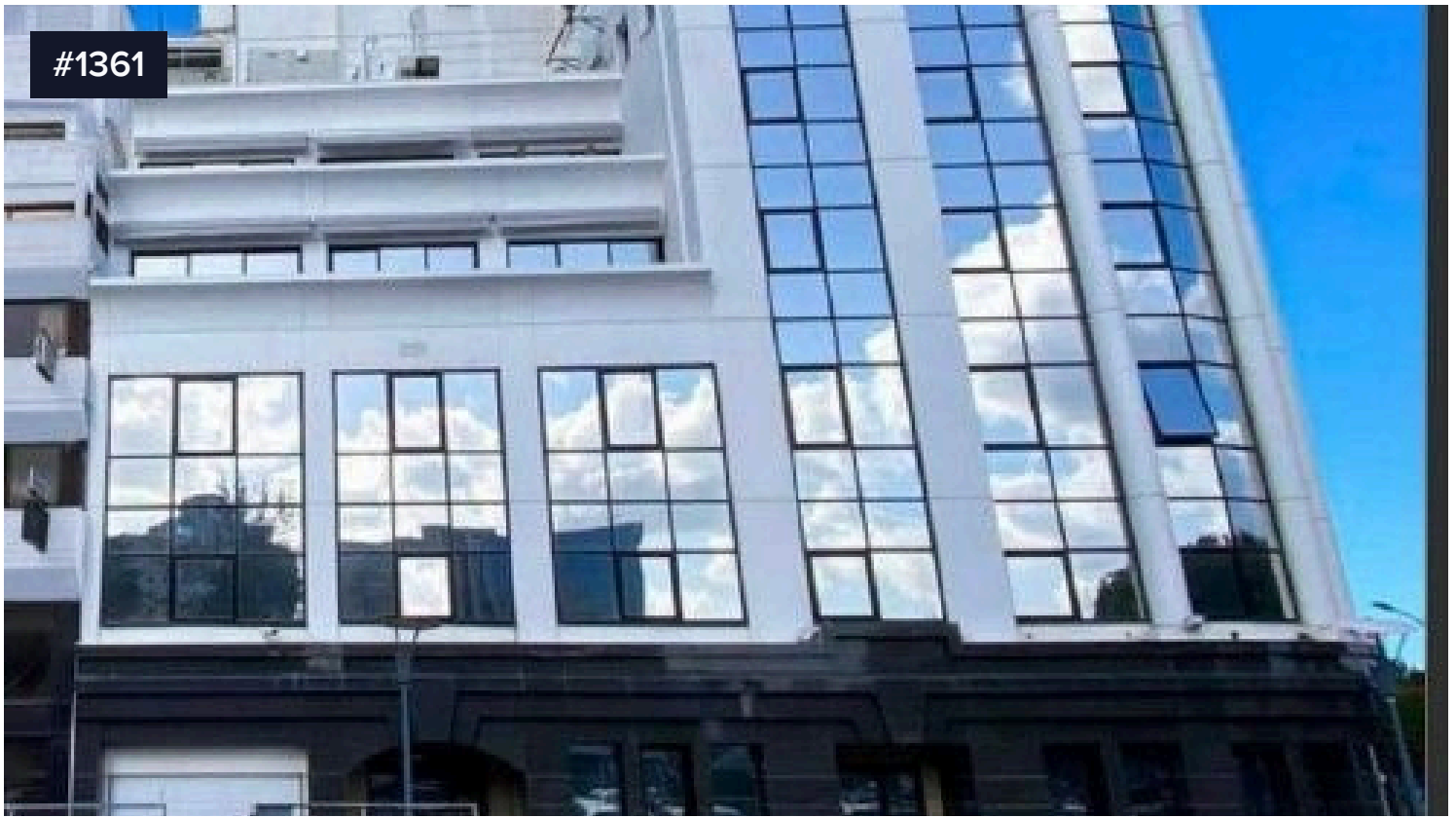


#1361



5th Floor - Commercial Property - Historical Centre - Limassol

€24,000 /month

📍 Limassol Town Centre, Limassol

Introducing a remarkable commercial property nestled in the heart of the Historical Centre, adjacent to the prestigious Limassol Marina. This exceptional workspace boasts an exclusive design meticulously crafted to enhance the experience of a team of professionals, elevating their stay, fostering creativity, and maximizing productivity. With 10 covered parking spaces and occupying the entire 5th floor, this office offers ample convenience and privacy. The breathtaking sea view adds a touch of inspiration, while the accessible location ensures seamless connectivity. Spanning 458 m² of covered area and an additional 142 m² of uncovered space, the total area encompasses an

Covered

📏 458 m²

Energy efficiency rating



Top Stay Homes



Paris Papargyrou

📧 paris@topstayhomes.com

