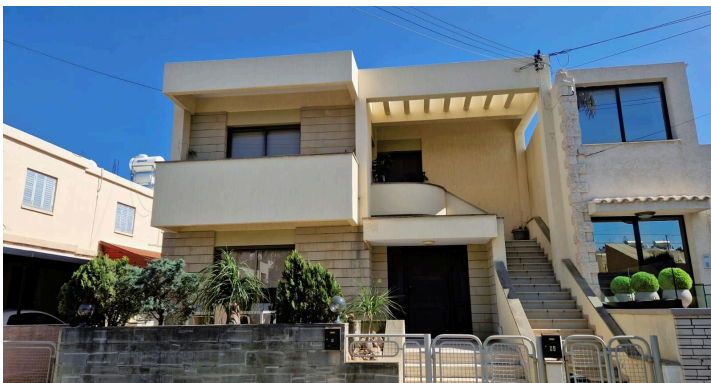


# Top Stay Homes



## 6 Bedroom Semi-detached For Sale #1654

€610,000

Two houses, upper and lower, with 3 bedrooms each, in the area of Mesa Geitonia, Panthea.

Each house has one full bathroom and one guest toilet.

The upper house has an open-plan living, kitchen, dining area.

The lower house has a separate kitchen and a combined living and dining area.


The total land area is 275m<sup>2</sup>, with a covered area of 280m<sup>2</sup> for both houses (140m<sup>2</sup> each).

Condition and Construction:

The lower house was built in 1989 and is in very good condition.

 3

 2

 280 m<sup>2</sup>