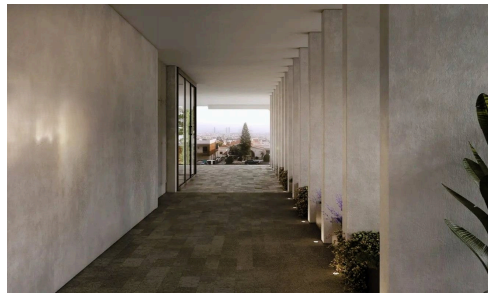


#1836



## Modern 2 Bedroom Apartment In Prime Location With Communal Swimming Pool

€435,000 +VAT

 Panthea, Limassol

A newly designed project will be located in one of Limassol's prime locations, Panthea. The building's contemporary design and elegant layout will add beauty to the neighborhood. The building will accommodate luxurious two- and three-bedroom apartments with limitless natural light and unforgettable views of Limassol's coastline and city. A fully equipped gym and a communal swimming pool will add comfort and luxury to all residents.

Bedrooms

 2

Bathrooms

 1

Covered

 87 m<sup>2</sup>

Energy efficiency rating

 A

**Top Stay Homes**



**Marios Georgiou**

 (+357) 99342265

 marios@topstayhomes.com

