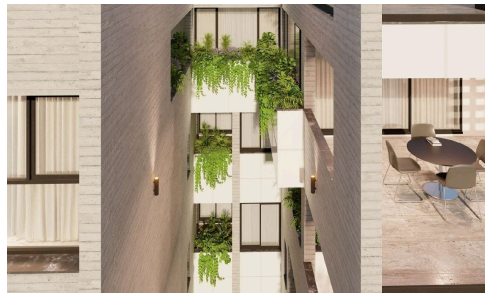


#2101



## Top Floor 3 Bedroom Apartment With Roof Garden And Photovoltaic Panels

€650,000 <sup>+VAT</sup>

 Panthea, Limassol

For sale: A modern, top-floor apartment currently under construction in the sought-after area of Panthea. This spacious property offers 110.85 m<sup>2</sup> of internal space, designed for comfortable family living. The apartment features three well-sized bedrooms, underfloor heating, and an energy efficiency rating of A+, ensuring both comfort and sustainability. Enjoy the convenience of a private basement and the ease of access with an elevator directly to your floor.

Bedrooms

 3

Covered

 110.85 m<sup>2</sup>

Energy efficiency rating

 A+

Top Stay Homes



Paris Papargyrou

 paris@topstayhomes.com

